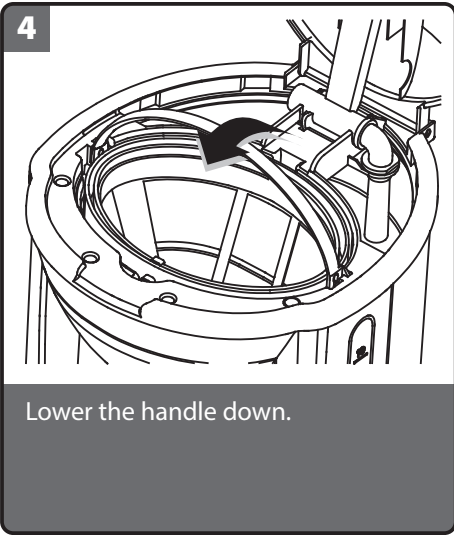
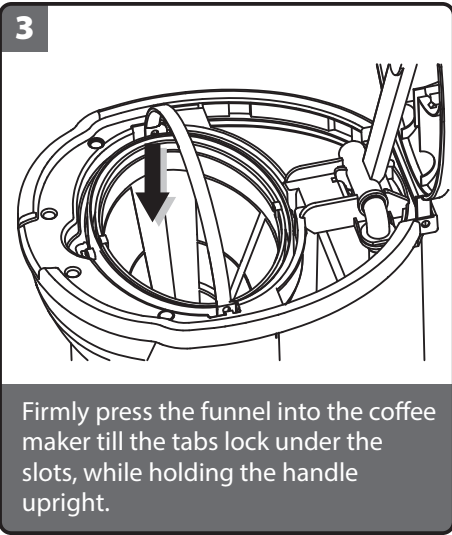
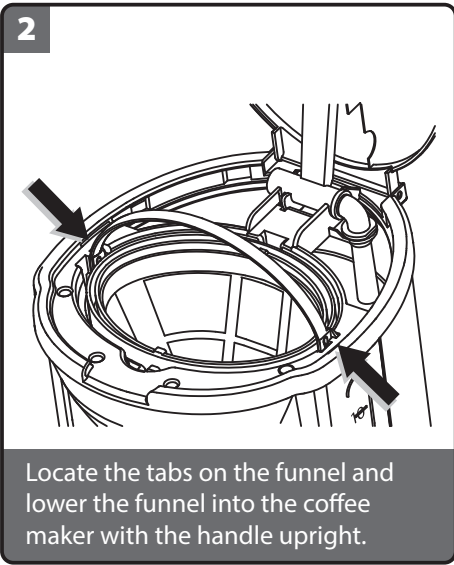
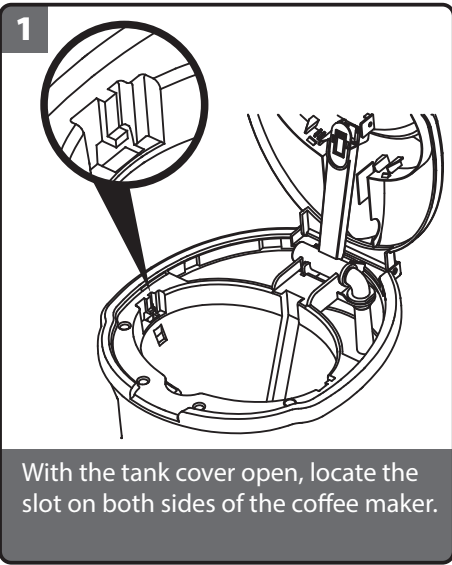


FUNNEL ASSEMBLY

- Water will overflow if the funnel is not locked firmly and properly.
- The funnel should not move when locked properly.



CLEANING AND MAINTENANCE

Be sure to unplug this appliance before cleaning. To protect against electrical shock, do not immerse the mains cable, mains plug or the appliance in water or liquids. After each use, always make sure the mains plug is first removed from the mains socket.

1. Clean the filter, jug and jug lid after each use in hot, soapy water.
2. Wipe the appliance's exterior surface with a soft, damp cloth to remove stains. Do not use strong detergents or aggressive cleaners.
3. Water droplets may build up in the area above the filter and drip onto the product base during brewing. To control the dripping, wipe off the area with a clean, dry cloth after use.
4. Use a damp cloth to gently wipe the warming plate. Never use abrasive cleaners to clean it.

CLEANING MINERAL DEPOSITS

To keep your coffee maker operating efficiently, you should regularly clean away mineral deposits left by the water. The amount of mineral deposits will depend on the water quality in your area and the frequency of use.

Fill the jug with one part white vinegar and three parts cold water. Pour the water and vinegar mixture into the tank (do not place any coffee ground in the appliance). Heat the water-vinegar solution as per steps 1-6 in “**OPERATION**”. Repeat until no yellow liquid comes out, then pour out the mixture. Clean the filter, funnel jug and jug lip with hot soapy water until no vinegar is left.

HINTS FOR GREAT-TASTING COFFEE

1. A clean coffee maker is essential for making great-tasting coffee. Regularly clean the coffee maker as specified in “CLEANING AND MAINTENANCE”. Always use fresh, cold water in the coffee maker.
2. Store unused ground coffee in a cool, dry place. After opening a package of ground coffee, reseal it tightly and store it in a refrigerator to maintain its freshness.
3. For optimum coffee taste, buy whole coffee beans and finely grind them just before brewing.
4. Do not reuse ground coffee since this will greatly reduce the coffee's flavour. Reheating ground coffee is not recommended as because coffee taste best immediately after brewing.
5. Clean the coffee maker when over-extraction causes oiliness. Small oil droplets on the surface of brewed, black coffee are due to the extraction of oil from the ground coffee.
6. Oiliness may occur more frequently if heavily roasted coffees are used.

HINTS AND TIPS

Problem	Possible Causes	Remedy
Unit not working	Fuse blown	Check plug fuse
No coffee dripping into the jug	Nozzle blocked on funnel	Clean nozzle
Coffee on warming plate goes cold after a short while	Coffee maker is not plugged in	Connect coffee maker to the mains socket

SPECIFICATIONS

Mains supply: 230V ~50Hz  
Power consumption: 1000W

We continually strive to improve our products. Specifications may change without prior notice.



For general information about this appliance and handy hints and tips, please visit [www.knowhow.com/knowledgebank](http://www.knowhow.com/knowledgebank) or call 0844 5611234



Visit [Partmaster.co.uk](http://Partmaster.co.uk) today for the easiest way to buy electrical spares and accessories. With over 1 million spares and accessories available we can deliver direct to your door the very next day. Visit [www.partmaster.co.uk](http://www.partmaster.co.uk) or call 0844 800 3456 (UK customers only) Calls charged at National Rate.



The symbol on the product or its packaging indicates that this product must not be disposed of with your other household waste. Instead, it is your responsibility to dispose of your waste equipment by handing it over to a designated collection point for the recycling of waste electrical and electronic equipment. The separate collection and recycling of your waste equipment at the time of disposal will help conserve natural resources and ensure that it is recycled in a manner that protects human health and the environment. For more information about where you can drop off your waste for recycling, please contact your local authority, or where you purchased your product.

Digital Coffee Maker

LC10DCB12 Brilliant Blue  
LC10DCC12 Classic Cream  
LC10DCR12 Ruby Red



Thank you for purchasing your new Logik Coffee Maker.

We recommend that you spend some time reading this instruction manual in order to fully understand all the operational features it offers.

Read all the safety instructions carefully before use and keep this instruction manual for future reference.

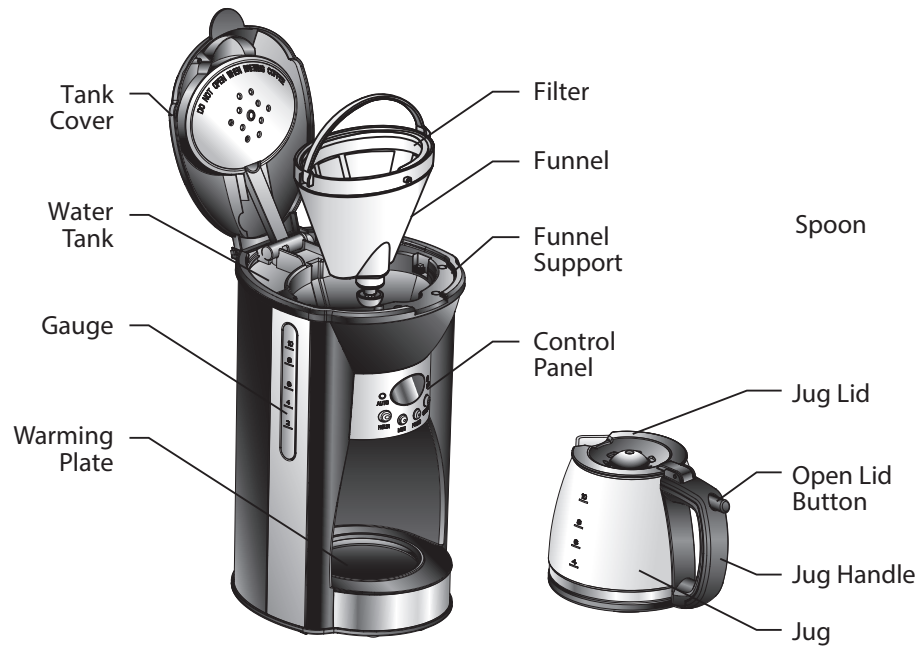
SAFETY FIRST!

- For your continued safety and to reduce the risk of injury or electric shock, please follow all the safety precautions listed below.
- Read all the instructions carefully before using this appliance and keep them for future reference.
  - Retain the manual. If you pass the appliance on to a third party, make sure to include this manual.
  - Make sure that your outlet voltage corresponds to the voltage stated on the rating label of the appliance.
  - Unplug the appliance from the mains socket when not in use, or before cleaning any part of the appliance.
  - Do not operate any appliance with a damaged mains cable or mains plug, or in an abnormal state. If the mains cable is damaged it must be replaced by the manufacturer, its service agent, or similarly qualified persons in order to avoid a hazard.
  - Do not use an extension cable, it may result in fire, electrical shock and/or personal injuries.
  - Do not let the mains cable hang over the edge of the table or counter, or touch hot surfaces.
  - To disconnect, remove the mains plug from the mains socket. Never pull the mains cable to remove the mains plug from mains socket.
  - Never immerse the appliance in water and always keep the electrical contacts dry.
  - Be careful not to get scalded by the steam.
  - Use handles or oven gloves. Accessible surfaces may get hot.
  - Do not touch the appliance whilst in use as there are hot surfaces on this appliance.
  - Never use the appliance if the jug shows any signs of cracks. Only use the jug supplied with this appliance. Handle the jug with caution as it is very fragile.
  - Never leave an empty jug on the warming plate otherwise the jug is liable to crack.
  - Never switch your appliance on without water in it.
  - Stand the appliance on a stable flat surface before use.
  - Only use the appliance for its intended domestic use.
  - This appliance can be used by persons aged from 8 years and above and persons with reduced physical, sensory or mental capabilities, or lack of experience and knowledge if they have been given supervision or instructions concerning the use of the appliance in a safe way and understand the hazards involved. Children should not play with the appliance. Cleaning and user maintenance should not be made by children unless they are older than 8 years old and are supervised.
  - Keep the appliance and its cord out of reach of children less than 8 years old.
  - This appliance is intended for indoor household use and similar applications such as:
    - farm houses and by clients in hotels, motels and other residential type environment;
    - bed and breakfast type environment;
    - catering and similar non-retail applications.
  - Children should be supervised to ensure that they do not play with the appliance.

UNPACKING

- Remove all packaging from the unit. Retain the packaging. If you dispose of it please do so according to any local regulations.
- The following items are included:
- The coffee maker appliance
  - Jug
  - Funnel
  - Filter
  - Spoon
  - Instruction Manual
- If items are missing or damaged, please contact Partmaster (UK only).  
Tel: 0844 800 3456 for assistance.

PRODUCT OVERVIEW

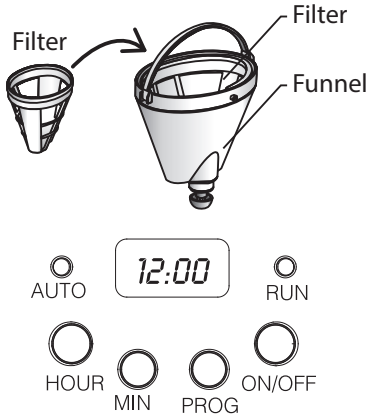


FIRST TIME USE

Fill the tank with clean water up to the maximum level 10. Follow the steps in “OPERATION” (without adding ground coffee) once or twice, then pour out the hot water. Clean the jug, lid and funnel thoroughly with warm water. You may now use your coffee maker.

OPERATION

1. Open the tank cover of the coffee maker and fill with the correct amount of water into the tank. The water level should not exceed the maximum level 10.
2. Add ground coffee into the filter. Usually a cup of coffee needs a level spoonful of ground coffee, but you may adjust according to your taste.
3. Place the filter with the ground coffee in the funnel. Place the filter into the funnel support of the coffee maker, making sure it is assembled correctly, see **Funnel Assembly** for details.
4. Place the jug on the warming plate horizontally.
5. Plug the mains cable into the mains socket, the LCD will display **12:00**.



OPERATION (Cont.)

6. Press the **ON/OFF** button, the **RUN** indicator will illuminate red. The appliance will begin operating.  
**Note:** You can remove the jug, pour and serve at any time once the coffee is made. The coffee maker will stop dripping automatically. The jug must be replaced within 30 seconds.
7. Do not open the tank cover while the coffee maker is operating.
8. You can remove the jug to serve when brewing is finished (about one minute after the coffee stops dripping into the jug.)  
**Note:** The amount of coffee you get will be less than the water you have put in the tank, as some water is absorbed by the ground coffee.
9. Always turn the coffee maker off and unplug the mains cable from the mains socket when the coffee maker is not in use.

- Keep the lid of the jug closed when pouring. This will also keep the coffee warm.
- The brewed coffee in the jug and the grounds in the filter are very hot. Handle with care to avoid scalding.

AUTOMATIC START FUNCTION

If you do not want the coffee maker to start immediately, for example it is now 8:10 am, and you want the coffee maker to automatically start at 1:00 pm, first follow steps 1 to 5 in “OPERATION”, then set the automatic start function as follows:

1. Press the **PROG** button, the LCD will display **CLOCK**. Set the current time by pressing the **HOUR** and **MIN** button.  
**Note:** The time cycle is 24 hours. Select desired time by pressing the **HOUR** and **MIN** buttons continuously.
2. Press the **PROG** button again, the LCD will display **TIMER**, then set the automatic start time by pressing the **HOUR** and **MIN** buttons.
3. Press the **ON/OFF** button twice, the **AUTO** indicator will illuminate green. The LCD will display the current clock after about 10 seconds, you may see the automatic start time by pressing the **PROG** button twice.



You may cancel the automatic start function by pressing the ON/OFF button. If you want to change the automatic start time, repeat the above 1-3 steps again.

At 1:00 pm, the **AUTO** indicator will turn off, and the **RUN** indicator will illuminate red. The appliance will then start automatically. After brewing, you can replace the jug on the warming plate. Whilst the coffee maker is connected to the mains, the coffee can be kept warm.

The coffee maker will automatically shut off if left unattended for 2 hours.